

Tittabawassee River, Saginaw River & Bay Site

Update for the CAG

Mary P. Logan – U.S. EPA

CAG Virtual Meeting May 18, 2020

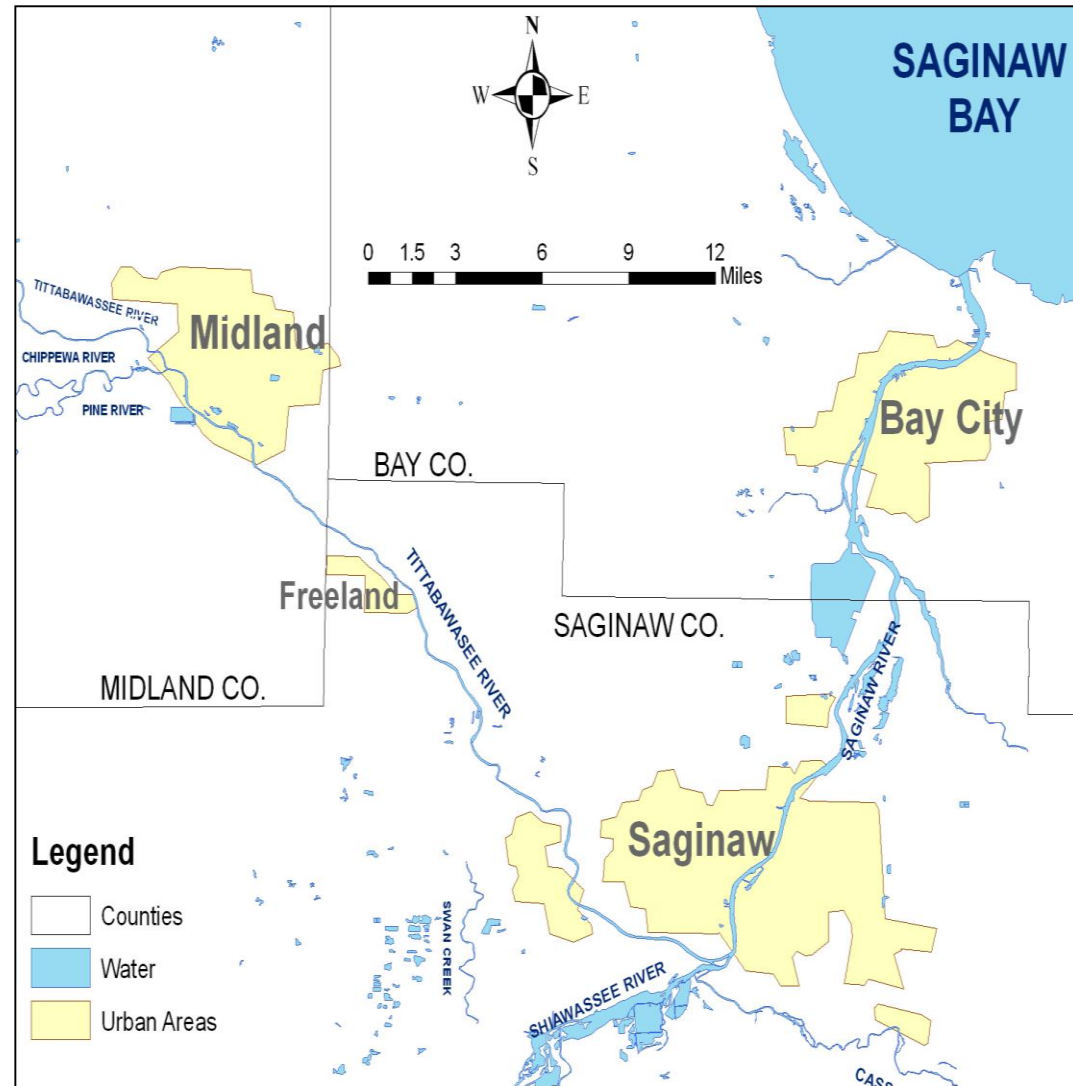


Agenda

- Tittabawassee River – in-channel and banks update
- Tittabawassee River – floodplain update
- Middleground Island (MGI) update
- Q & A

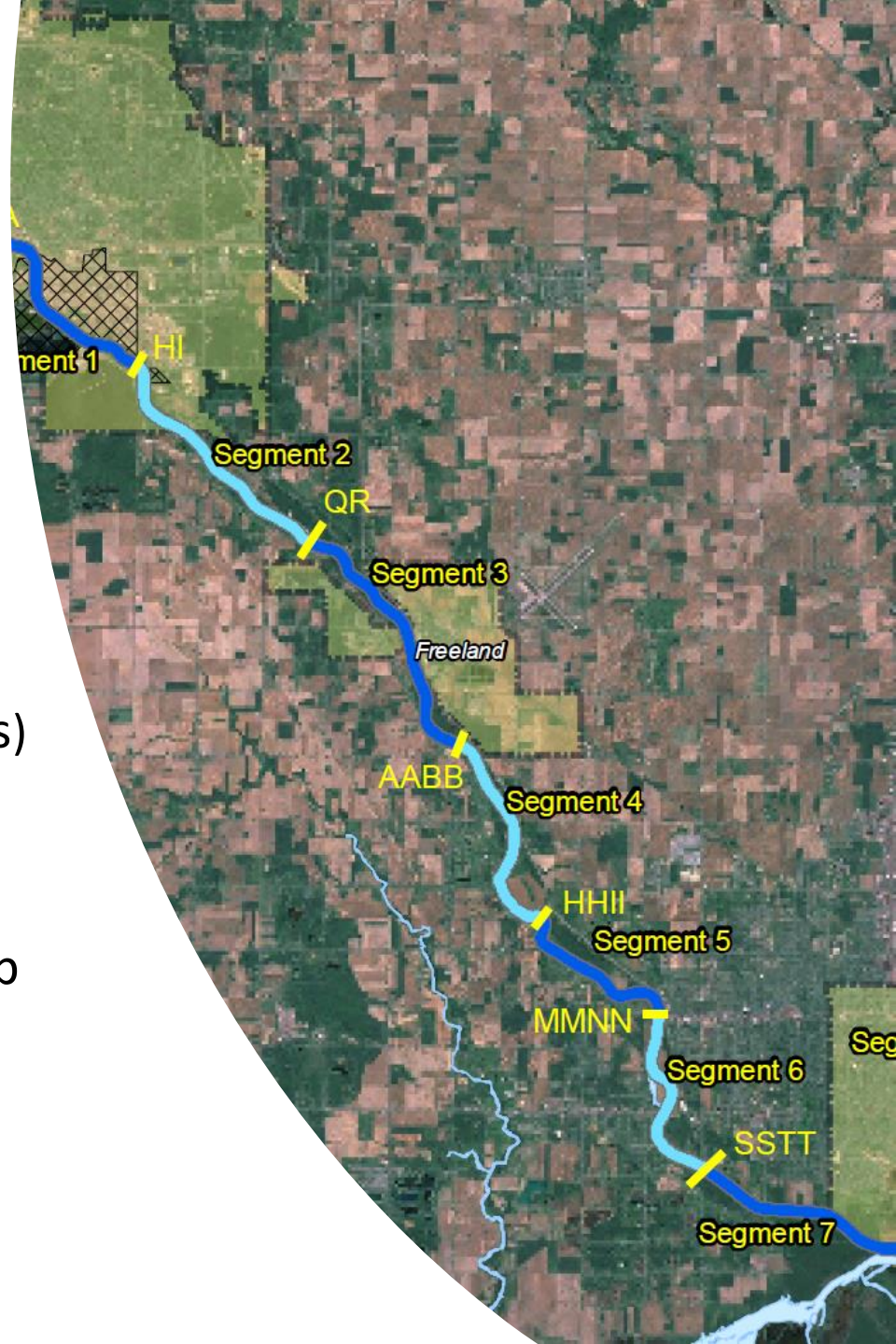
Tittabawassee River, Saginaw River & Bay Site

- Site includes:
 - 24 miles of the lower Tittabawassee River
 - The 22-mile Saginaw River
 - Portions of Saginaw Bay
- Dioxins/furans are the primary site-related contaminants of concern



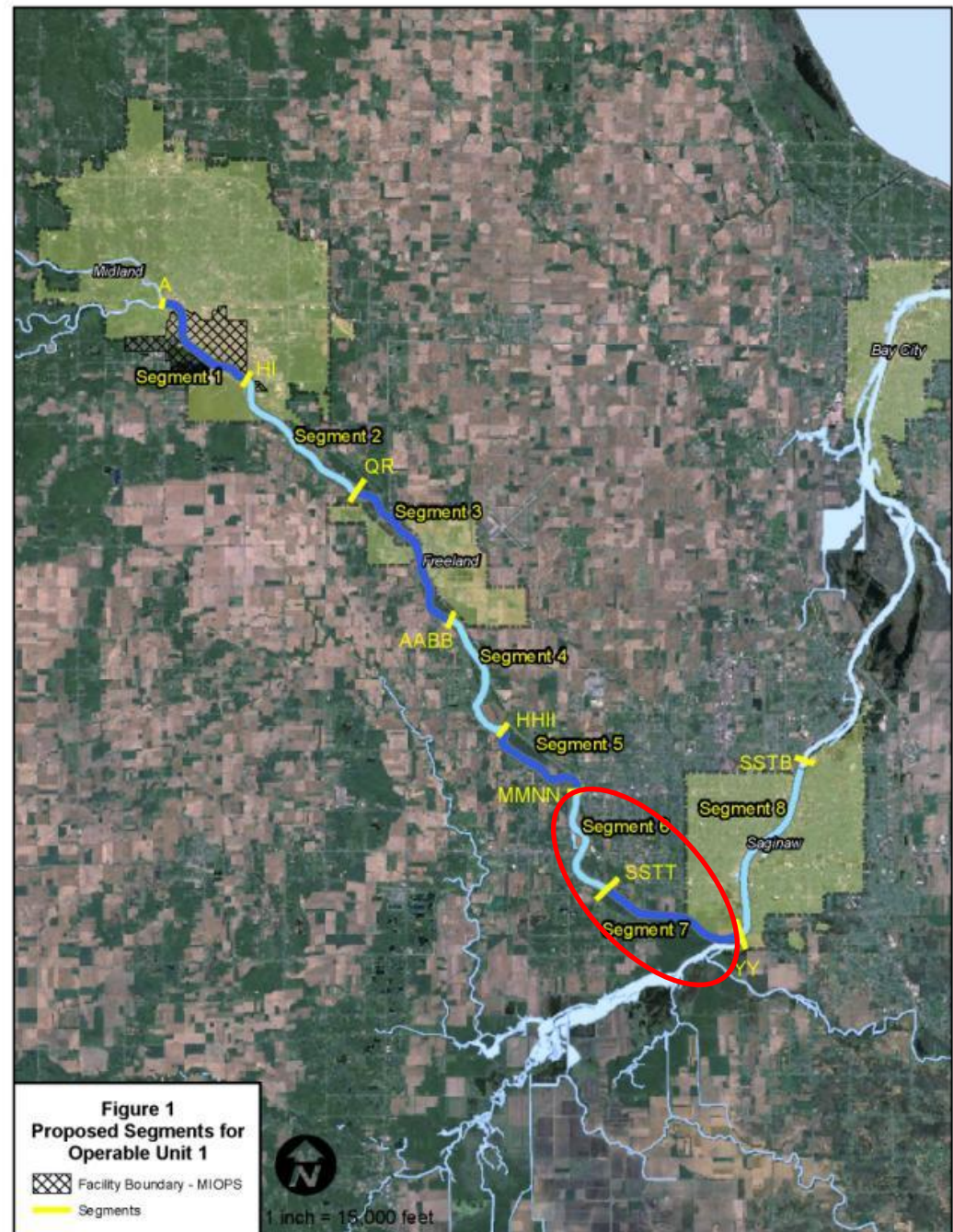
Site Management

- General upstream to downstream approach
- Tittabawassee divided into seven segments
 - 3 – 4 miles each
 - Cleanup of sediment management areas (SMAs) and bank management areas (BMAs)
- Segments 1 – 5 generally complete
 - Continue to assess post-cleanup conditions
- Saginaw River will follow
 - MGI accelerated



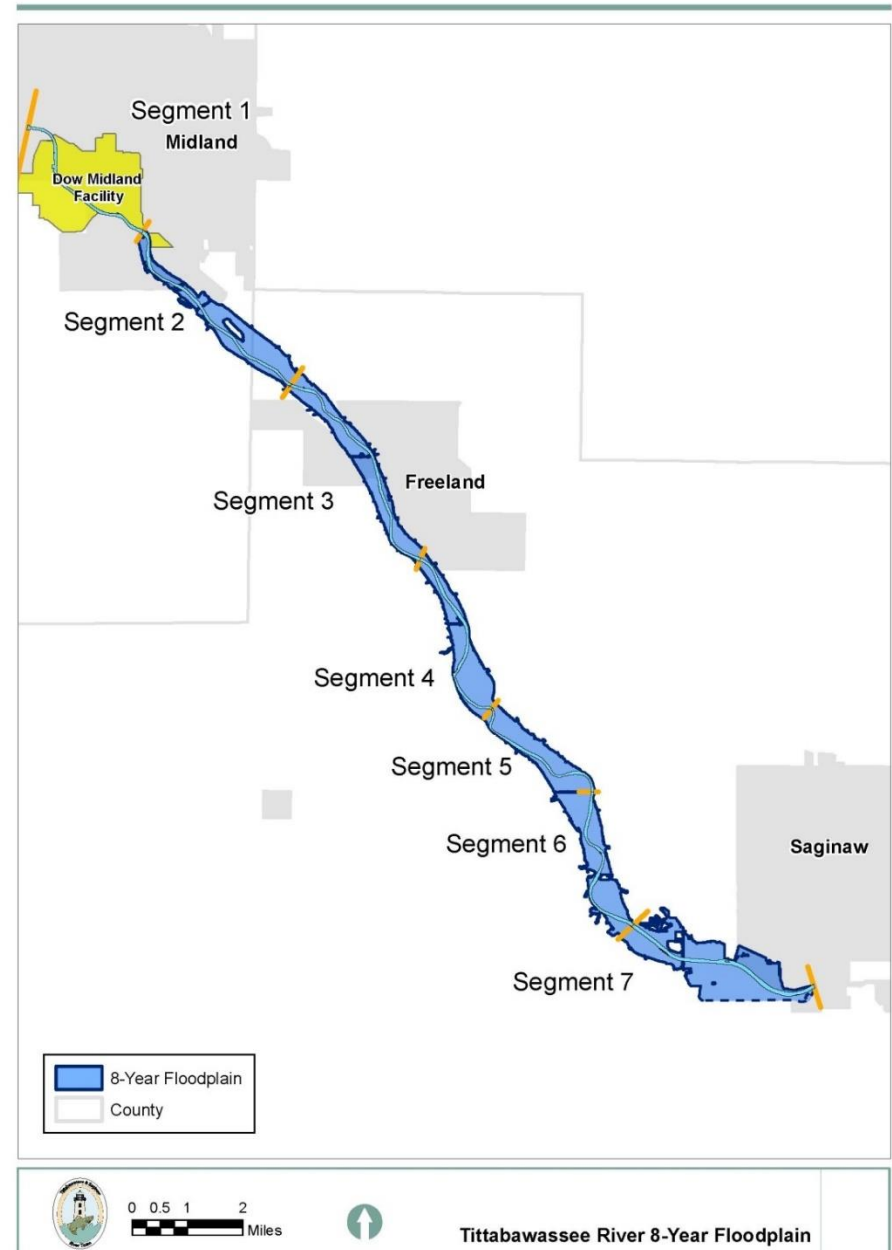
Segments 6 & 7

- 2019 cleanup selected and started; expected complete 2021
- Starts ~ 17.7 miles downstream
- Cleanup options selected by EPA
 - 7 BMAs – stabilization
 - 4 SMAs – capping and MNR
- SMA capping work expected in 2020



Tittabawassee River Floodplain Cleanup

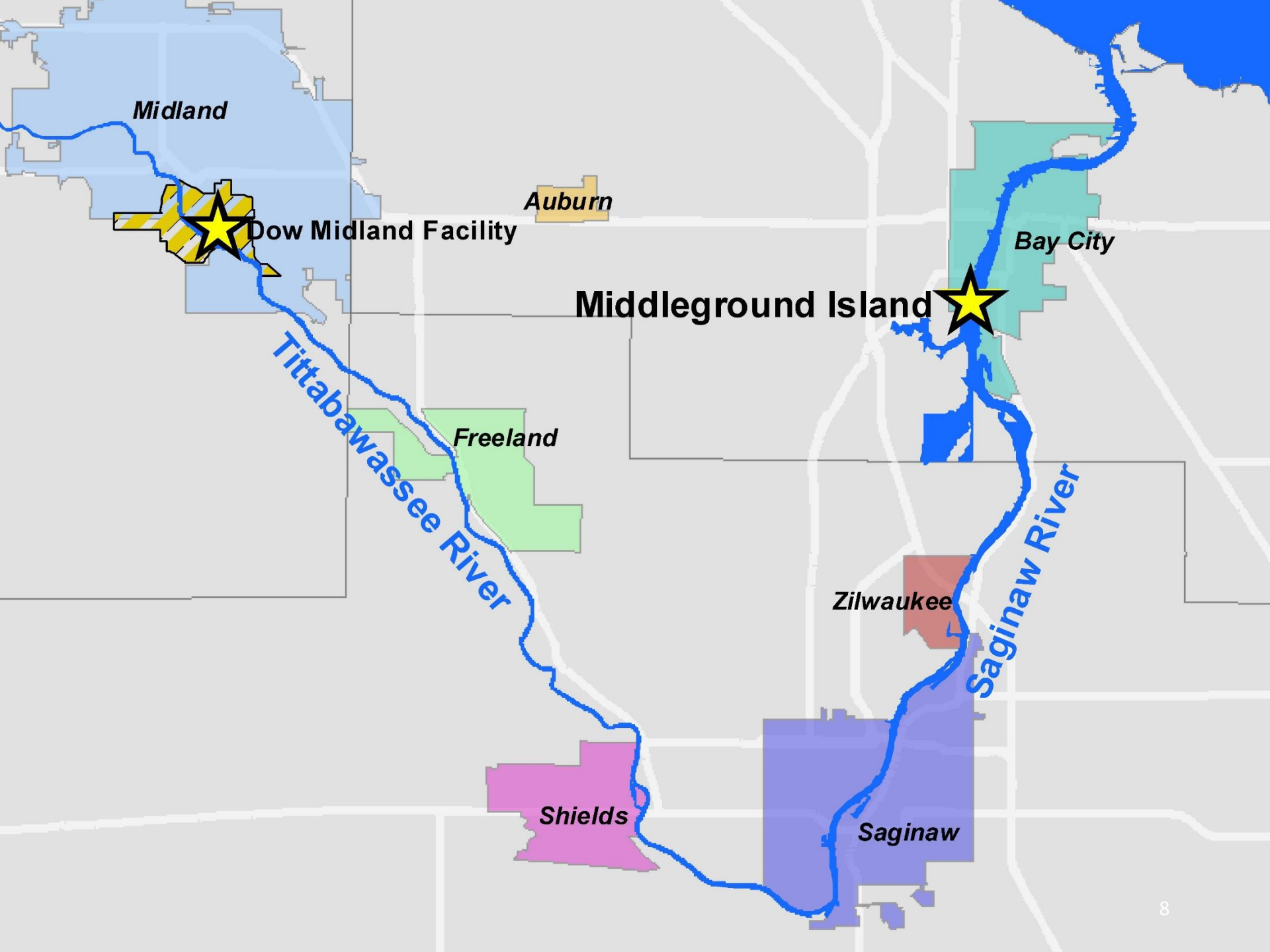
- 2015 cleanup selected and started
- Site-specific cleanup numbers developed
- If cleanup number is exceeded soil is dug out and replaced
- About 4,500 acres in the 8-year floodplain
 - Not all areas need cleanup
 - > 700 property parcels to be evaluated



TR Floodplain Cleanup

- Expected to continue in 2020 and through 2021





Midland

Dow Midland Facility

Auburn

Middleground Island

Bay City

Tittabawassee River

Freeland

Zilwaukee

Saginaw River

Shields

Saginaw

EPA's Proposed MGI Cleanup Option

- Removal and Backfill
 - Remove contaminated soil in residential yards that exceeds 250 parts per trillion (ppt) of dioxin
 - Replace with clean soil and restore yards



MGI Key Findings

- 17/45 sampling units (SUs) in the residential area exceed EPA's 250 ppt residential cleanup goal
 - Residential SUs ranged from 14 – 1290 ppt
- Non-residential areas are all well below EPA's 2000 ppt non-residential cleanup goal
 - SUs ranged from 53 – 757 ppt
- About 15 acres need cleanup
 - ~ 35,000 CY in place; ~46,000 CY to truck

MGI Decision Status

- EPA is completing review of public comments
 - Public comment period February 12 through March 30, 2020
 - Comments from 14 entities
 - Vast majority of comments are related to access and traffic
- EPA, working with EGLE, is finalizing the plan
- EPA expects Dow to implement this work; planning 2020 and construction targeted for 2021
 - Design each cleanup plan working with affected property owners
 - Prepare the traffic management plan and work with stakeholders
 - Prepare the health and safety plan and work with stakeholders

QUESTIONS OR COMMENTS?